

McNALLY SAYAJI ENGINEERING LTD.



COMPANY PROFILE





MCNALLY SAYAJI ENGINEERING LTD. (MSEL)

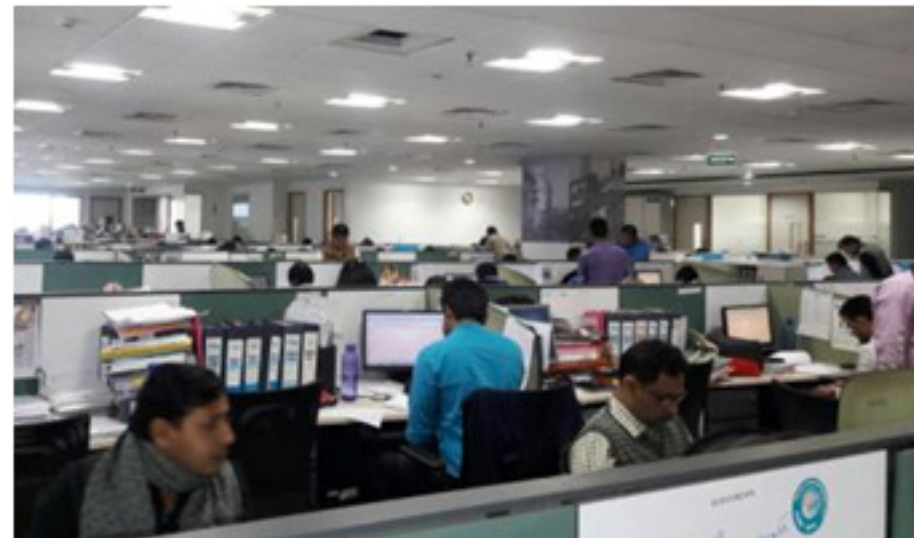
**Over 5 decades in business
of
Crushing, Screening and Material Handling
Equipment & Process Equipment for
Mineral and Mining Industry**





CORPORATE OFFICE :

**MCNALLY SAYAJI ENGINEERING LTD
ECOSPACE, CAMPUS 2B,
NEWTOWN
KOLKATA 700160
INDIA**





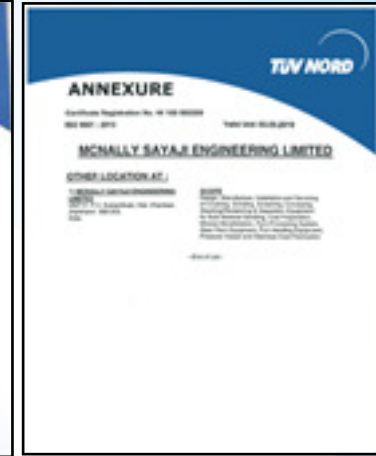
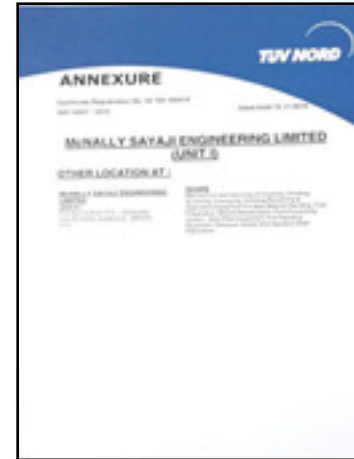
KUMARDHUBI

ISO 14001:2015

ISO 9001:2015



Annexure



NABL CERTIFICATE FOR MECHANICAL TESTING LABORATORY

ASANSOL ISO 9001:2015

VADODARA ISO 9001:2015





KUMARDHUBI



OPEN AREA : 32,250 m²
COVERED AREA: 18,750 m²

UNIT - I

UNIT - II





MACHINE SHOP

KUMARDHUBI FACTORY - UNIT II





VADODARA FACTORY



OPEN AREA : 79795 Sqm

COVERED AREA: 20900 sqm



VADODARA MANUFACTURING FACILITY

**MACHINE SHOP/ FABRICATION
SHOP
AREA 25X150 m**

**ASSEMBLY SHOP/FABRICATION
SHOP
3 BAYS-25X150 m EACH**



BENGALURU FACTORY / OFFICE



OPEN AREA : 16,100 m²



COVERED AREA : 4,500 m²

BENGALURU FACTORY



ASANSOL FACTORY



OPEN AREA: 83,500 m²
COVERED AREA : 17,500 m²



MANUFACTURING FACILITY-ASANSOL





MANUFACTURING FACILITY-ASANSOL



STRINGENT INSPECTION



MSEL PRODUCT RANGE

- 1. CRUSHING EQUIPMENT**
- 2. SCREENING EQUIPMENT**
- 3. GRINDING EQUIPMENT**
- 4. FEEDING EQUIPMENT**
- 5. MATERIAL HANDLING EQUIPMENT**
- 6. ASH HANDLING EQUIPMENT**
- 7. PROCESS PLANT EQUIPMENT**
- 8. STEEL PLANT EQUIPMENT**
- 9. WHEEL & SKID MOUNTED CRUSHING PLANT**
- 10. CONSTRUCTION EQUIPMENT /PLANT**
- 11. JOB SHOP FOR PORT, OPEN CAST MINING ETC.**

CRUSHING EQUIPMENT

- **ROLL CRUSHER :** Single Roll Crusher
Toothed Double/ Triple Roll Crusher
Smooth Double Roll Crusher
- **HEAVY DUTY IMPACTOR**
- **GENERAL DUTY IMPACTOR (EK SERIES)**
- **SWING HAMMER REVERSIBLE IMPACTOR**
- **REVERSIBLE HAMMER MILL**
- **ONE WAY HAMMER MILL**
- **RING GRANULATOR**
- **JAW CRUSHER :** Single Toggle Jaw Crusher
Double Toggle Jaw Crusher
- **CONE CRUSHER**
- **COKE CUTTER**
- **ROTARY BREAKER**
- **CHAIN MILL**
- **LUMP LOOSENER**
- **SINGLE ROLL LUMP BREAKER** (SIZES 600 mm TO 710mm DIA & 100mm TO 2000mm DIA)

CRUSHING EQUIPMENT

ROLL CRUSHER SINGLE ROLL CRUSHER



- **SIZES:**
ROLL DIA - 500 mm to 1800 mm
ROLL WIDTH - 450 mm to 2800 mm



CRUSHING EQUIPMENT

ROTORS OF TOOTHED DOUBLE ROLL CRUSHER



TRIPLE ROLL CRUSHER



FOR TWO STAGE REDUCTION IN A SINGLE UNIT. USED FOR COAL, LIME STONES, FERTILIZERS AND CHEMICALS

CRUSHING EQUIPMENT

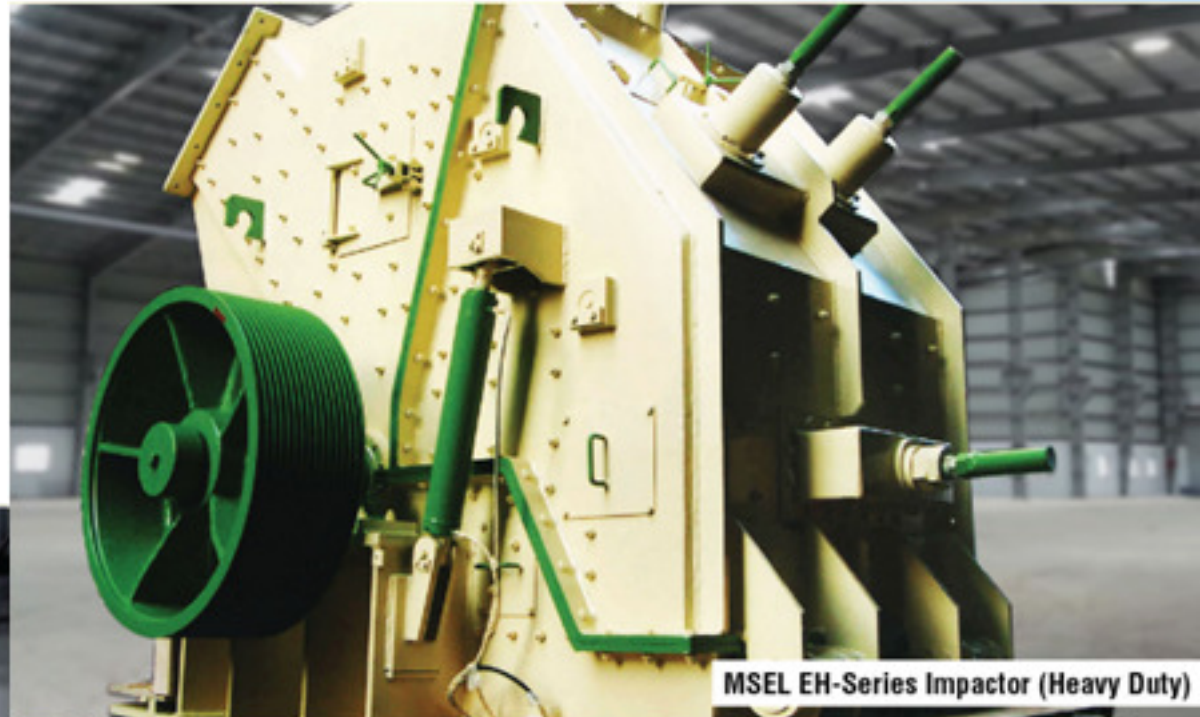
DOUBLE ROLL CRUSHER



**DIAMETER 500 mm TO 1600 mm,
WIDTH 500 mm TO 3800 mm,
CAPACITY RANGE 10 TPH to 800 TPH**

CRUSHING EQUIPMENT

HEAVY DUTY IMPACTOR



DIAMETER 600 mm TO 1600 mm,
WIDTH 600 mm TO 2000 mm,

CRUSHING EQUIPMENT

EK SERIES IMPACTOR



**DIAMETER 800 mm TO 1800 mm,
WIDTH 800 mm TO 2400 mm,
CAPACITY UPTO 600 TPH FOR 15 mm PRODUCT**



**ROTOR OF 1800 mm DIA X 2400 mm WIDE
600 TPH COAL IMPACTOR**

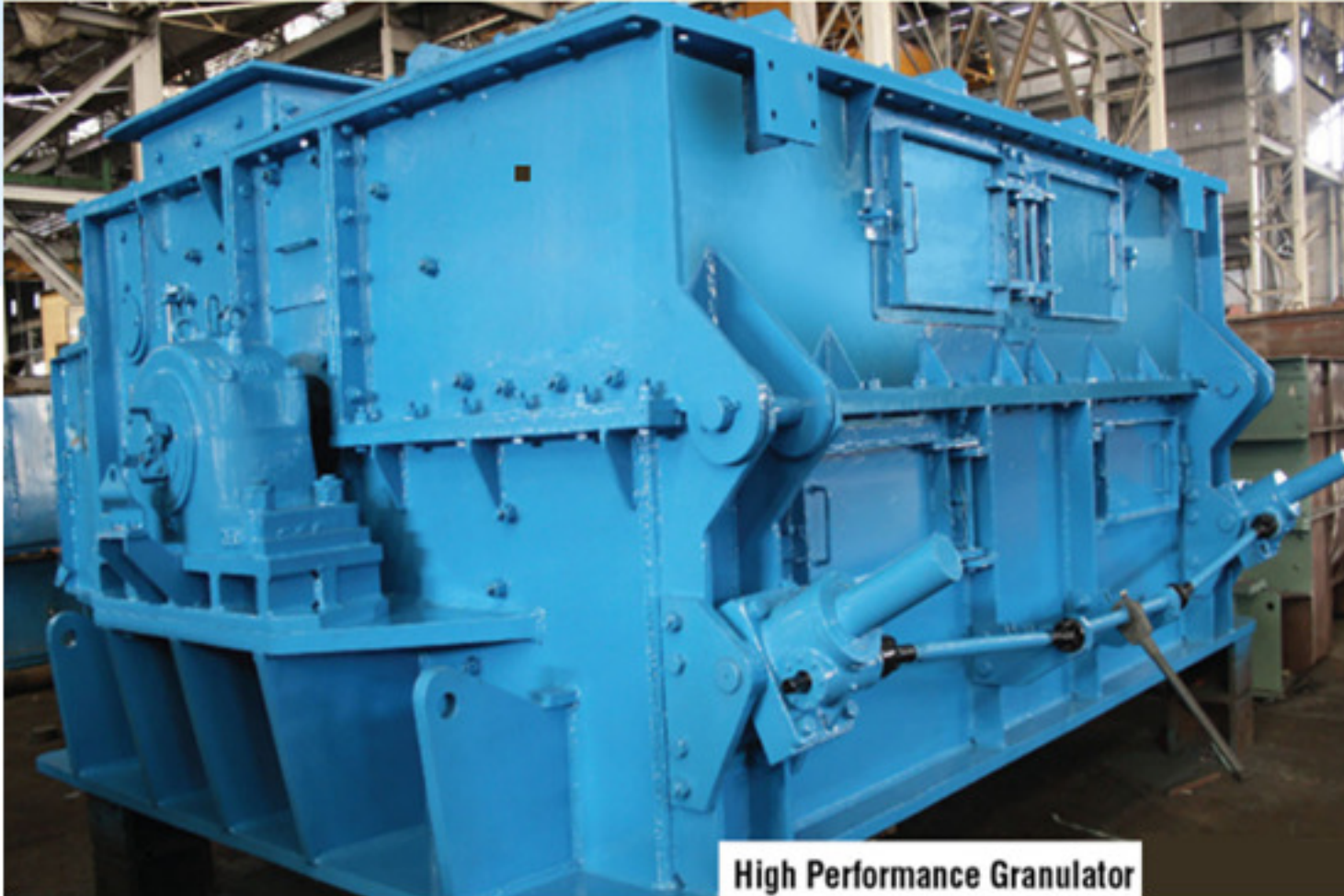
CRUSHING EQUIPMENT

REVERSIBLE HAMMER MILL



- **SIZES:**
FROM 400 mm DIA X 400 mm LONG
TO 2000 mm DIA x 2200 mm LONG

RING GRANULATOR



High Performance Granulator

SIZES :
FEED OPENING FROM 500 mm X 1100 mm
TO 1000 mm X 3300 mm

CRUSHING EQUIPMENT

SINGLE TOGGLE JAW CRUSHER



**SIZES FROM 250 mm X 900 mm
TO 1050 mm X 1200 mm.**

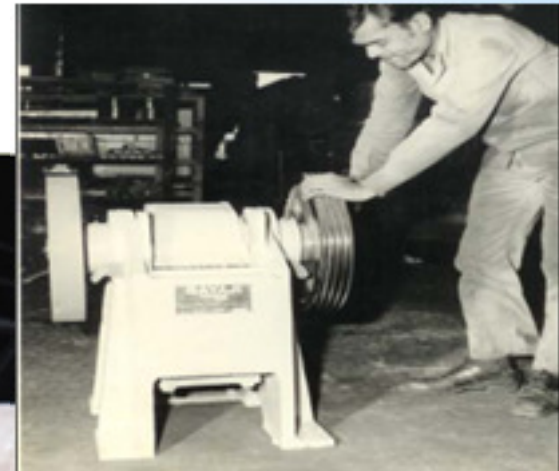


CRUSHING EQUIPMENT



DOUBLE TOGGLE JAW CRUSHER

SIZES FROM 300 mm X 175 mm
TO 1500 mm X 1200 mm.



MSEL Double Toggle Jaw Crusher

CRUSHING EQUIPMENT

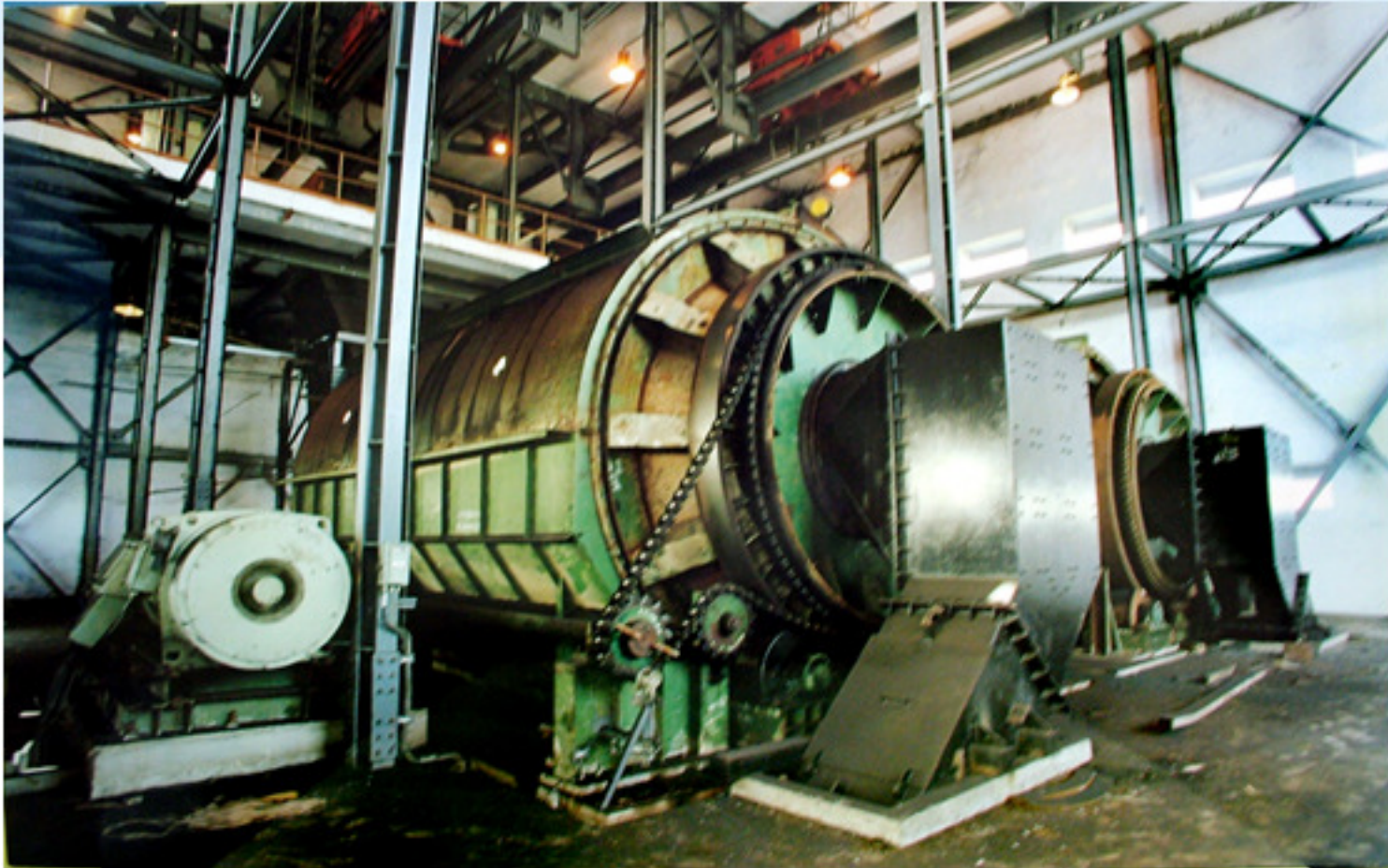
CONE CRUSHER



500 mm TO 1200 mm DIA

CRUSHING EQUIPMENT

ROTARY BREAKER



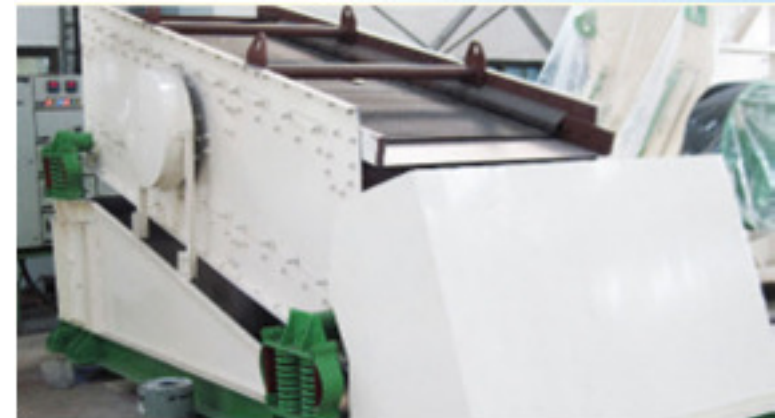
SIZE:
FROM 12' DIA. X 18' LONG
TO 12' DIA. X 27' LONG

SCREENING EQUIPMENT

- **CIRCULAR MOTION VIBRATING SCREEN**
- **LINEAR MOTION VIBRATING SCREEN**
- **ROLLER SCREEN**
- **LIVE ROLL GRIZZLY (SIZE: 1200 mm WIDE X 3800 mm LG, 1200 mm WIDE X 4400 mm LG.)**
- **HIGH PARTICLE ACCELERATION SCREEN**
- **BANANA SCREEN**
- **SCREENING FEEDER**

SCREENING EQUIPMENT

CIRCULAR MOTION VIBRATING SCREEN



WIDTH 600 mm TO 2500 mm &
LENGTH 1300 mm TO 7000 mm,

SCREENING EQUIPMENT

LINEAR MOTION VIBRATING SCREEN



SIZES :
FROM 1200 mm WIDE X 2500 mm LONG
TO 3400 mm WIDE X 6500 mm LONG

SCREENING EQUIPMENT



ROLLER SCREEN

SIZES :
FROM 1500 mm WIDE X 3000 mm LONG
TO 2400 mm WIDE X 6000 mm LONG



HIGH PARTICLE ACCELERATION SCREEN



SIZES :
FROM 1500 mm WIDE X 4410 mm LONG
TO 2000 mm WIDE X 8800 mm LONG

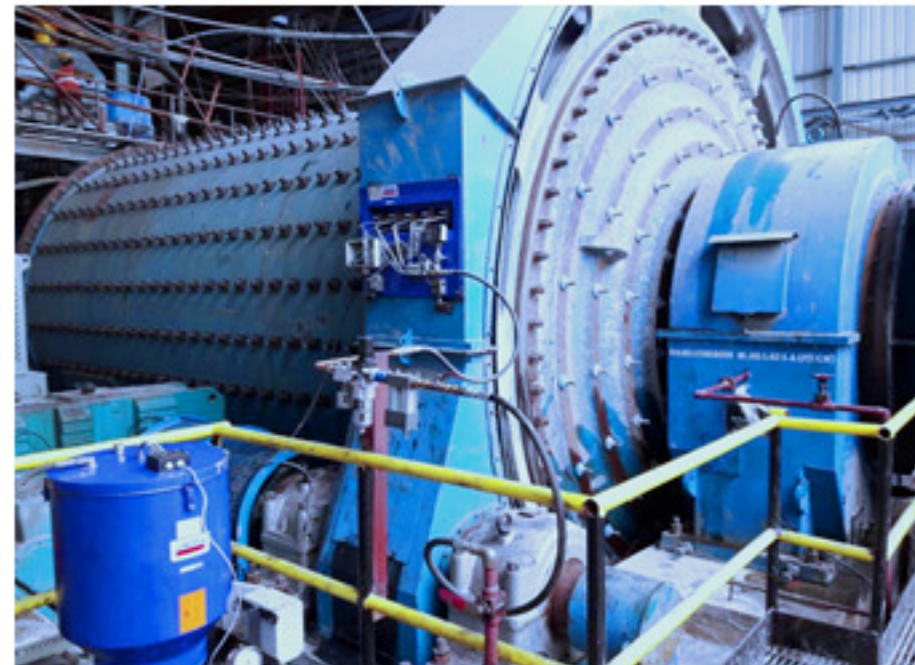
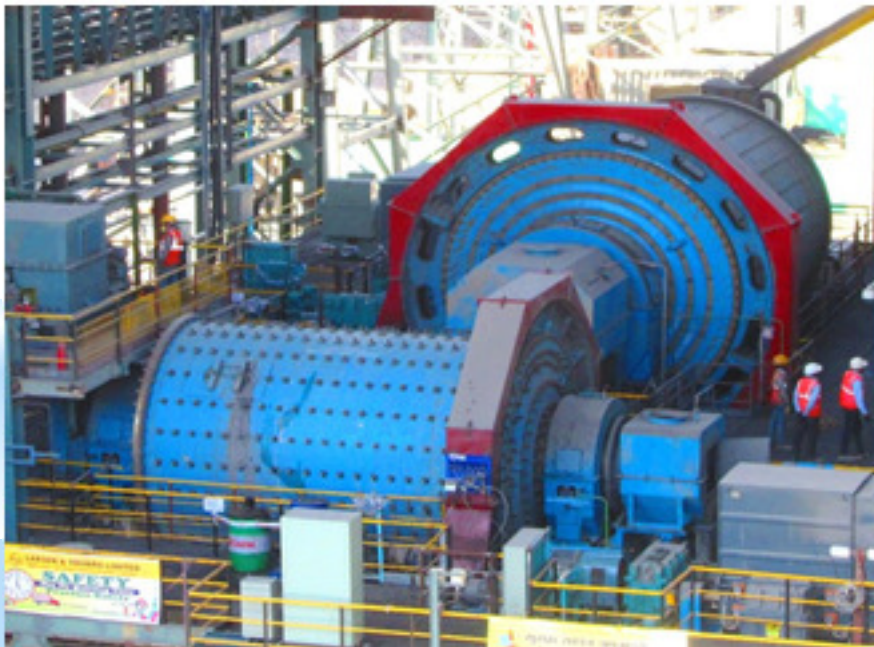
- BALL MILL
- ROD MILL
- VIBRATING TUBE MILL

BALL MILL

SIZE: UPTO 5 m DIA
 MOTOR :UPTO 4600 kw
 FEED:80% MINUS 20 mm
 PRODUCT:80% MINUS 44 MICRONS

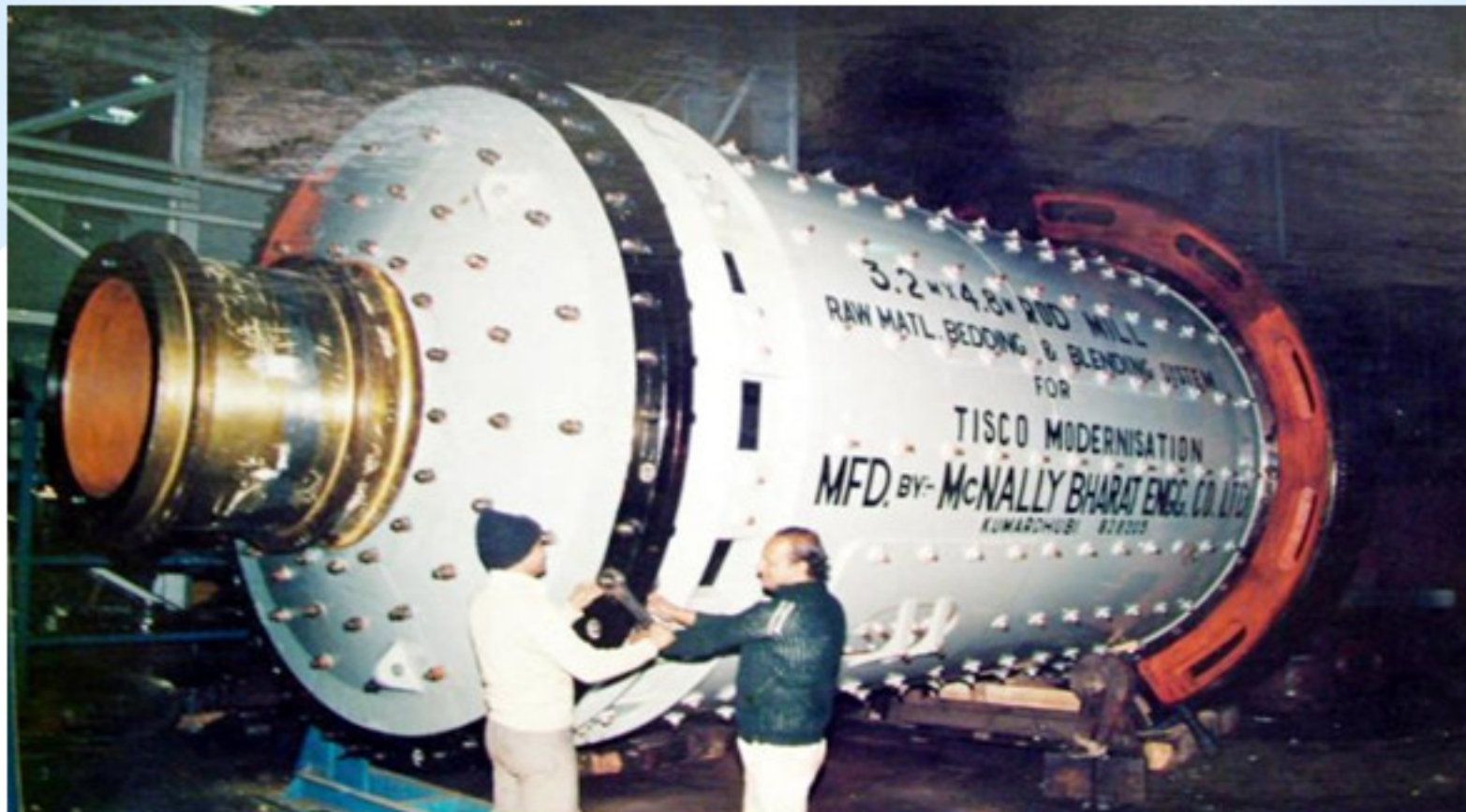


BALL MILL SHELL
 4.8 m Dia X 8.0 m LG (FOR DEIFY)



GRINDING EQUIPMENT

ROD MILL



SIZE: UPTO 4.4 m DIA
LENGTH : UPTO 6.3 m

FEEDING EQUIPMENT

- APRON FEEDER
- RECIPROCATING FEEDER
- VIBRATORY FEEDER
- DISC FEEDER (DIAMETER UPTO 1500 mm)
- GRIZZLY FEEDER
- BELT FEEDER
- PADDLE FEEDER

APRON FEEDER



ONE OF THE LONGEST APRON CONVEYORS IN THE WORLD 74.10 m LONG, 1.2 m WIDE WAS EXPORTED FOR SOHAR ALUMINIUM, OMAN THROUGH SOLIOS, FRANCE.



FEEDING EQUIPMENT

GRIZZLY FEEDER



SIZE: UPTO 8' WIDE X 20' LONG

PADDLE FEEDER



**CAPACITY RANGE:
FROM 200 TPH to 5000 TPH**

MATERIAL HANDLING EQUIPMENT

- WAGON TIPLER
- SIDE ARM CHARGER
- STACKER RECLAIMER
- BUCKET ELEVATOR
- TRIPPER
- BELT CONVEYOR & COMPONENTS
- SCREW CONVEYOR
- GRAVITY ROLLER CONVEYOR
- POWERED ROLLER CONVEYOR
- EOT CRANE (FROM 35 MT to 100 MT)



MATERIAL HANDLING EQUIPMENT

WAGON TIPPLER



CAPACITY	110 MT
TYPE	ROTASIDE
NO OF TIPS	20 PER HOUR

FOR VEDANTA ALUMINA LTD
JHARSUGUDA



MATERIAL HANDLING EQUIPMENT

STACKER - RECLAIMER



ADANI PORT (MUNDRA)

BIGGEST CAPACITY STACKER - RECLAIMER MANUFACTURED IN INDIA

CAPACITY	6000 X 2500 TPH
TRACK GAUGE	10000 mm
MATERIAL	COAL
BOOM LENGTH	41000 mm

PROCESS PLANT EQUIPMENT

- SLURRY PUMP
- FLOTATION CELL
- COLUMN FLOTATION CELL
- THICKENERS
- CENTRIFUGAL GRAVITY CONCENTRATOR
- MAGNETIC SEPARATOR
- FILTERS
- ROTARY SCRUBBER

MEDIUM DUTY PUMPS TYPE MV



- AVAILABLE IN 9 SIZES - 25 mm to 200 mm DISCHARGE
- CATERING TO FLOWS UPTO 600 m³/hr

HEAVY DUTY VASA HD PUMPS



- AVAILABLE IN SIZES - 40 mm to 300 mm DISCHARGE
- CATERING TO FLOWS UPTO 3000 m³/hr

SLURRY PUMP

VERTICAL SUMP PUMPS - (TYPE MG)

- AVAILABLE IN 80CM, 120CM & 180cm FRAME LENGTHS SUITABLE FOR SUMPS UPTO 2.3 m DEEP
- AVAILABLE IN SIZES FROM 50 mm to 200 mm CAPABLE OF HANDLING CAPACITIES UPTO 600 m³/hr



CONE PUMP (TYPE - SPVC)



PROCESS PLANT EQUIPMENT

FLOTATION CELL - MECHANICAL



SOME MAJOR CLIENTS:

- HINDUSTAN ZINC LTD FOR ZINC & LEAD
- TATA STEEL LTD FOR COAL
- HINDALCO INDUSTRIES LTD, COPPER SLAG
- ACC LTD, LIMESTONE
- KONKOLA COPPER MINES, ZAMBIA FOR COPPER ORE
- IREL FOR SILLIMANITE



AVAILABLE SIZES

- MB 40 - 40 m³
- MB 17 - 17 m³
- MB 8 - 8 m³
- MB 3 - 3 m³
- MB 1.5 - 1.5 m³

PROCESS PLANT EQUIPMENT

THICKENER



- THE SIZE OF THICKENER RANGES FROM 5 m TO 65 m DIAMETER.

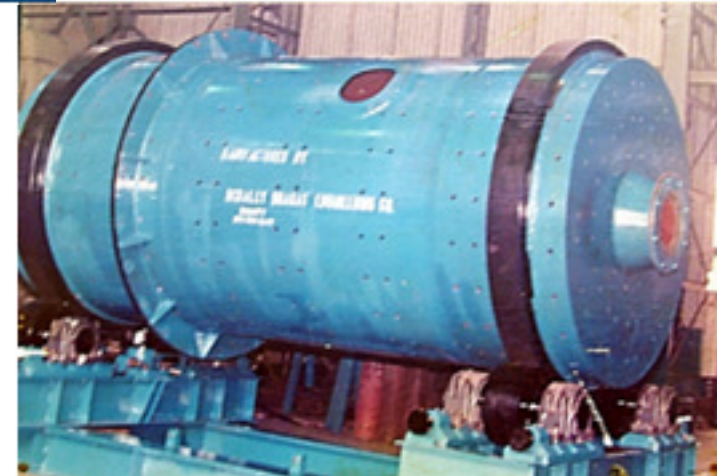
INSTALLATIONS IN INDIA AS WELL AS IN RUSSIA, ROMANIA, QATAR, INDONESIA, ZAMBIA, SAUDI ARABIA AND BOSNIA.

ROTARY SCRUBBER



**SIZES: 1.8 m DIA X 3.6 m LONG
TO 3 m DIA X 9 m LONG**

CAPACITY: UP TO 600 TPH





PROCESS PLANT SOLUTION

COMPREHENSIVE SOLUTIONS TO DESIGN AND BUILD MINERAL PROCESSING PLANTS AS PER INDIVIDUAL CUSTOMER REQUIREMENTS

SOLUTIONS FOR A RANGE OF MINERALS

IRON ORE
COPPER
LEAD - ZINC
CHROMITE
GOLD

LIMESTONE
BARYTE
ROCK PHOSPHATE

SERVICES OFFERED

- * ASSISTANCE WITH TESTING
- * BASIC ENGINEERING BASED ON TEST REPORTS
- * DETAILED ENGINEERING
- * EQUIPMENT SUPPLY AS PER CLIENT REQUIREMENT
- * SUPERVISION OF ERECTION
- * SUPERVISION OF COMMISSIONING

CONSTRUCTION EQUIPMENT & PLANT

- WHEEL MOUNTED AGGREGATE CRUSHING & SCREENING PLANT
- SKID MOUNTED/STATIONARY AGGREGATE CRUSHING & SCREENING PLANT
- SAND WASHING PLANT



SKID MOUNTED CRUSHING PLANT



MODEL	SM SR1114
MAX FEED SIZE	600 mm
OUTPUT SIZE	(-)100 mm 90%
MAX CAPACITY	400 TPH



WHEEL MOUNTED CRUSHING & SCREENING PLANT

PRIMARY CRUSHING UNIT
WITH FEED HOPPER , GRIZZLY FEEDER , JAW CRUSHER & ON BOARD CONVEYOR



MODEL : WM J 2436 / WM J 3042



CONSTRUCTION EQUIPMENT & PLANT



STATIONARY CRUSHING & SCREENING PLANT



**CAPACITY:
125TPH, 180TPH, 250TPH**



CONSTRUCTION EQUIPMENT & PLANT SAND WASHING PLANT



CAPACITY	80 TPH ,120 TPH 160 TPH & 200 TPH
FEATURES	One touch operation by using PLC Control Efficient silt cut point control & enabling Construction & Plastic Sand Production

JOB SHOP

- **PRESURE VESSEL**
- **HEAT EXCHANGER**
- **ROTARY KILN**
- **DRYER & COOLER**
- **SCRUBBER**
- **OPEN CAST MINING EQUIPMENT**
- **PORT HANDLING EQUIPMENT**
- **OTHER EQUIPMENT**

JOB SHOP PRESSURE VESSEL



DIASTER FILTERS



JOB SHOP HEAT EXCHANGER





JOB SHOP SCRUBBER



PORT HANDLING EQUIPMENT

BULK HANDLING CRANE



CAPACITY	45 MT
TRACK GAUGE	8000 mm
RADIUS	35000 mm
MAX. HEIGHT OF LIFT	50000 mm

PORT HANDLING EQUIPMENT

SHIPYARD CRANE - GOLIATH GANTRY CRANE



BIGGEST GOLIATH CRANE SUPPLIED TO MAZGAON DOCK LTD

CAPACITY	300 MT
SPAN	138000 mm
HEIGHT OF LIFT	65000 mm

OPENCAST MINING EQUIPMENT

BUCKET WHEEL EXCAVATOR



700 Ltr. BUCKET WHEEL
EXCAVATOR OF 1650 TONNE
WEIGHT FOR NEYVELI LIGNITE
CORPORATION LTD. WITH
DESIGN OF M/S POLTEGOR ENGG.
CO. LTD., POLAND

CRAWLER FOR BUCKET WHEEL EXCAVATOR



SOME MAJOR CLIENTS





Rungta Mines Ltd.



Steel | Power | Mining



A Navratna Company



ITC Limited



BHUSHAN



ISGEC HEAVY ENGINEERING LTD.



TATA CHEMICALS LIMITED



STEMCOR GROUP



V.V. MINERAL

ISO 9001 COMPANY



SESA GOA



Bhushan POWER & STEEL



Ambuja Cement

Giant Compressive Strength



BHUSHAN

Enhancing The World Of Steel



NAYA BHARAT

Nava Bharat Ventures Ltd.



THERMAX

HARI MACHINES

ANKIT

ANKIT METAL & POWER LTD.

ESSAR STEEL

ACC



Jayaswal Neco Industries Ltd.

An ISO 9001:2008 Certified Company

usha martin

vedanta



BIRLA CORPORATION LIMITED
MP BIRLA GROUP

DORR-OLIVER

HINDUSTAN DORR-OLIVER LIMITED

SARDA

SARDA ENERGY & MINERALS LTD.



MAWARID
MINING

Maihar Cement
PROP. CENTURY TEXTILES & IND. LTD.

JSW

JSW Steel Ltd.

FACOR

An Alloy of Growth & Success

MACMET



HWP

INDUJA NATIONAL POWER CORPORATION LTD.

STEMCOR

Every step in steel

HIRA

GODAWARI POWER & ISPAT

ESSAR

CONSTRUCTIONS

JCL

JANKI CORP LIMITED

Rashi Steel & Power Ltd.



MSPL LIMITED

BALDOTA

ADITYA BIRLA



UTKAL ALUMINA

BMM

POTENTIAL IN TONNES



archean



THANK YOU