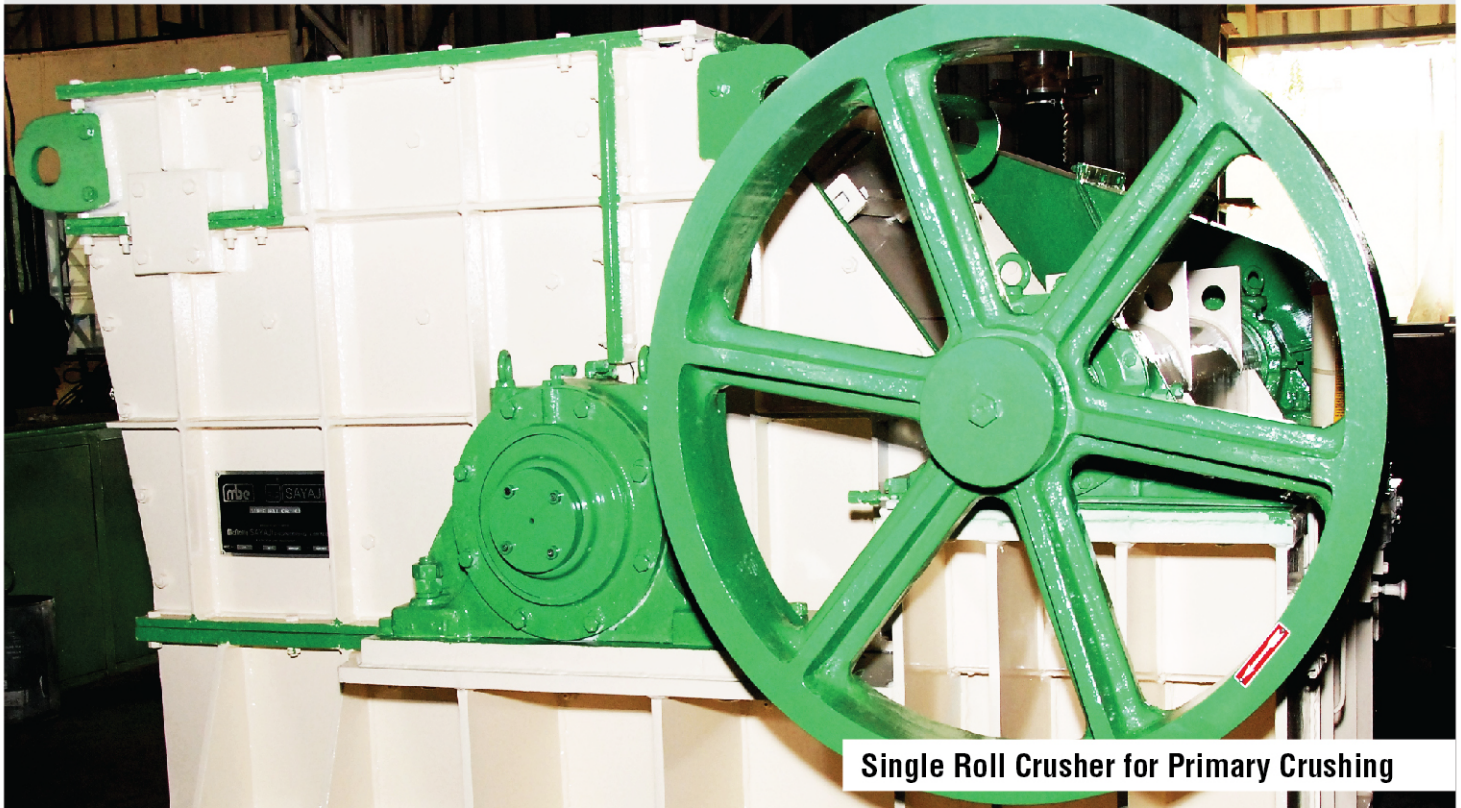


McNALLY SAYAJI ENGINEERING LIMITED

(A Member of the Williamson Magor Group)



SINGLE ROLL CRUSHER

At MSEL we believe in constantly reinventing ourselves. And in line with this we are always on the lookout for new avenues and opportunities.

McNally Sayaji Engineering Limited (MSEL), with factories in Kumardhubi, Asansol, Bangalore and Baroda, is one of the country's leading manufacturer of Crushing, Screening, Milling, Material Handling and mineral processing and other heavy equipment, serving the core sectors of the economy. These sectors include Coal, Mining, Power, Steel, Ports, Cement, Aluminium and Non-Ferrous Metals.

All manufacturing units of MSEL are ISO 9001-2008 certified with well established quality assurance department supported by modern testing facilities and

managed by a team of highly experienced professionals.

MSEL has branch offices at Kolkata, Bangalore, Chennai, Delhi, Mumbai, Hyderabad, Nagpur, Vishakhapatnam, Kochi, Vijaywada, Coimbatore. This makes MSEL capable to render comprehensive customer support.

MSEL has inducted technology over the years through strategic alliances and developed focused R&D and Design & Development teams, who offer optimum and cost effective solutions to meet customer needs.

APPLICATION

Single Roll Crusher is an ideal primary breaker for crushing ROM coal, soft to hard limestone, ores, etc. They can be built in large sizes to handle high capacities and run-of-mine large lumps.

OPERATING PRINCIPLE

The crushing rings on the rotor crush the material by piercing and pressing the material against the breaker plate. When un-crushable material upto certain size limit enters the crushing zone the springs are compressed and allow the material to pass through without any damage to the crusher.

The crushers are provided with shear pin and zero speed switch as additional safety device.

CONSTRUCTIONAL FEATURES

It consists of rotor assembly, breaker plate assembly, fabricated housing, gap adjusting mechanism and a drive system. In rotor assembly the highly wear resistant crushing rings with hexagonal bore are mounted on a hexagonal rotor body which is keyed to the rotor shaft. The breaker plate assembly is fabricated from heavy steel plates and has comb like projections duly hard faced at the bottom. It is hinged at the top and supported by heavy duty springs at the bottom. The power is transmitted to the counter shaft through a jack shaft and v-belt. There is further reduction of speed from the counter shaft to rotor assembly by a pinion-gear arrangement. Motorized or hand operated centralized grease lubrication system can also be provided.

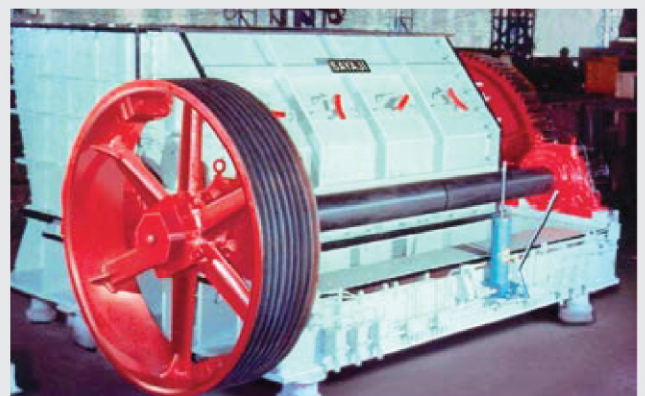
SALIENT FEATURES

- High crushing ratio achievable.
- Can accept very large feed size.
- Robust design and construction and slow speed operation ensures less fines, low power, low vibration, low operating cost.

AVAILABLE SIZES

Roll Dia	650 mm - 1800 mm
Roll Width	600 mm - 2800 mm
Higher Size can be supplied on request	
Feed Size	Max 1500 mm Edge Length for Average 300 mm Product
Product Size	Min 70 mm or above
Power	22 kW to 350 kW

NOTE: As improvements are made from time to time, specifications and other details are subject to change without notice.



McNally Sayaji Engineering Limited

Corporate Office: Ecospace Business Park, Campus-2B, 11F/12, New Town, Rajarhat, Kolkata 700 156, India. P +91-33-3014 2345/6628 2345; F +91-33-3014 2393.

Factories: Kumardhubi P +91-6540-273010/11, +91-6540-272 235/197; F +91-6540-273024 | Baroda P +91-2667-263000/2661-2793650; F +91-2667-263051 | Bangalore P: +91-08151399964/67/58 | Asansol M +91-8016090116, +91-8016090128.

Sales Office: Kolkata P +91-33-40111300; F +91-33-40111317 | Bangalore P +91-80 41153781-83; F +91-80 41153784 | Chennai M +91-9500011660; F +91-044-22431309 | Delhi M 9910661861 | Mumbai P +91 022-26397641 | Hyderabad P +91-040-27204395; F +91-040-27205361 | Nagpur M +91-9422114059; F +91-712-2535089/2560097 | Vishakhapatnam P +91-891-2551534 | Kochi P +91-9846034939; F +91-484-2405914 | Vijaywada M +91-9440320529 | Coimbatore M +91-978 978 0318.

Crusher | Screen | Grinding Mill | Feeder | Conveyor | Wagon Tippler | Pulley & Idler | Port Crane | Stacker Reclaimer | Mobile/Skid Mounted Crushing & Screening Plant | Slurry Pump | Thickener | Flotation Cell | Pressure Vessel | Equipment for Iron Ore, Steel, Cement, Power, Coal & Other Non-Ferrous Metal Processing Plants